



View of completed model

## Swallowtail Butterfly

Editor :  THE NATIONAL SCIENCE MUSEUM  
国立科学博物館

Among the larger butterflies, the swallowtail butterfly commonly encountered around Japanese homes has a forewing length of four to six centimeters. Its larva, known as a green caterpillar, eats the leaves of rutaceous plants like the trifoliate orange. The caterpillar sheds its skin four times, beginning with the first instar, and the larva becomes a chrysalis after the fifth instar. Ordinarily, it remains a chrysalis for approximately two weeks, but when hibernating over the winter, the larva can remain in the chrysalis stage for several months. The mature butterfly with its large, whitish yellow-spotted black wings can be seen roughly from March through October, searching for nectar from flowers and water.

\* This model was designed for Papercraft and may differ from the original in some respects.

■ Parts list (pattern): Five A4 sheets (No.1 to No.5)

■ No. of Parts: 22

\* Build the model by carefully reading the Assembly Instructions, in the parts sheet page order.

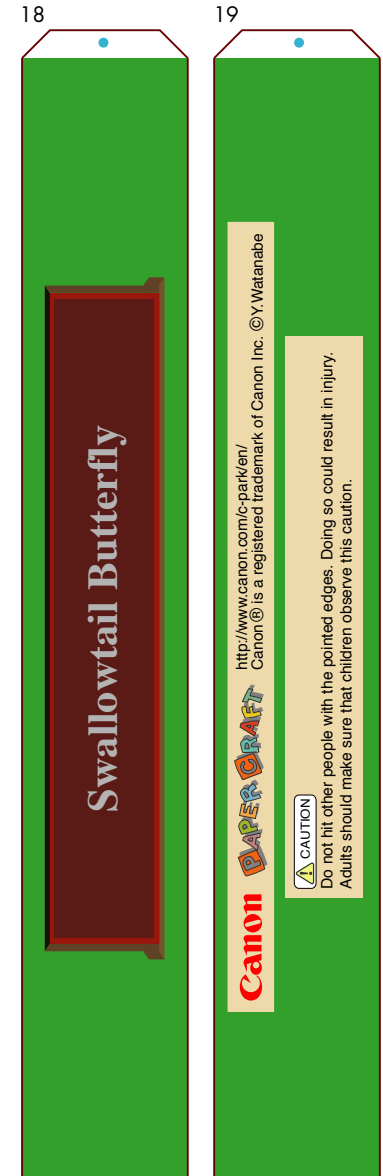
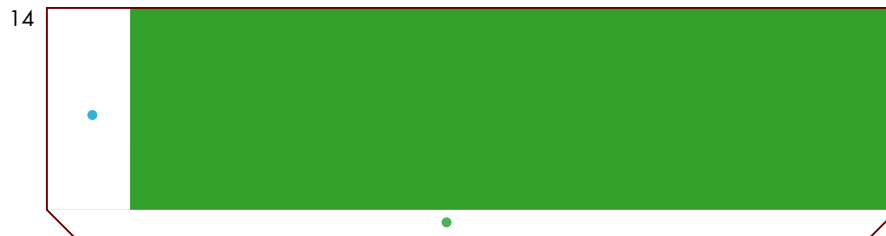
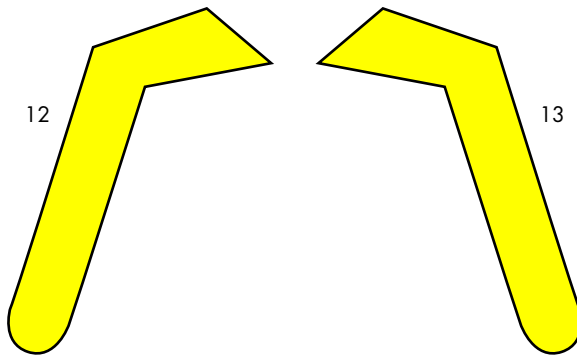
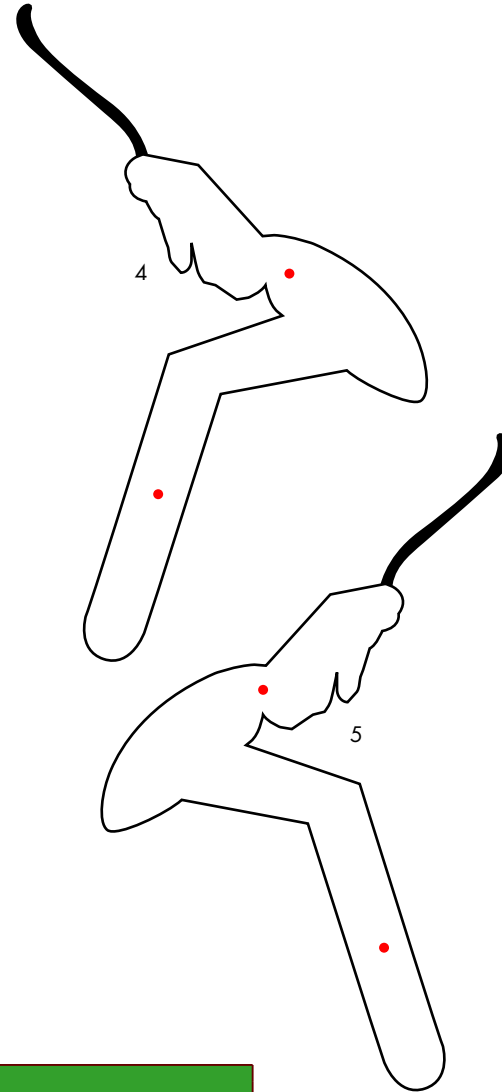
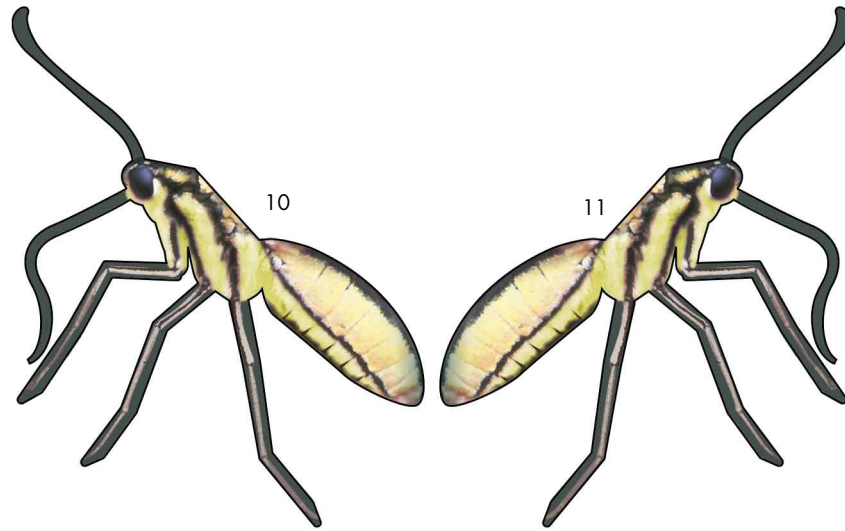


# Swallowtail Butterfly: Pattern

Canon® is a registered trademark of Canon Inc. © Canon Inc. © Y. Watanabe



# Swallowtail Butterfly: Pattern



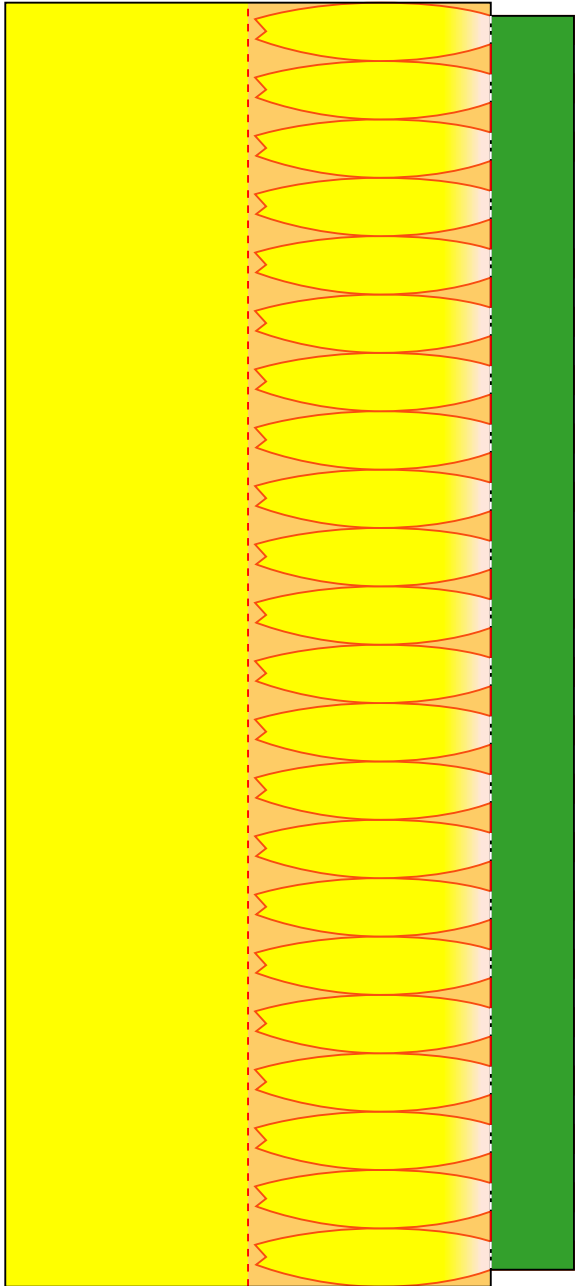
Swallowtail Butterfly

**Canon PAPER CRAFT**  
<http://www.canon.com/c-park/en/>  
Canon® is a registered trademark of Canon Inc. © Y. Watanabe

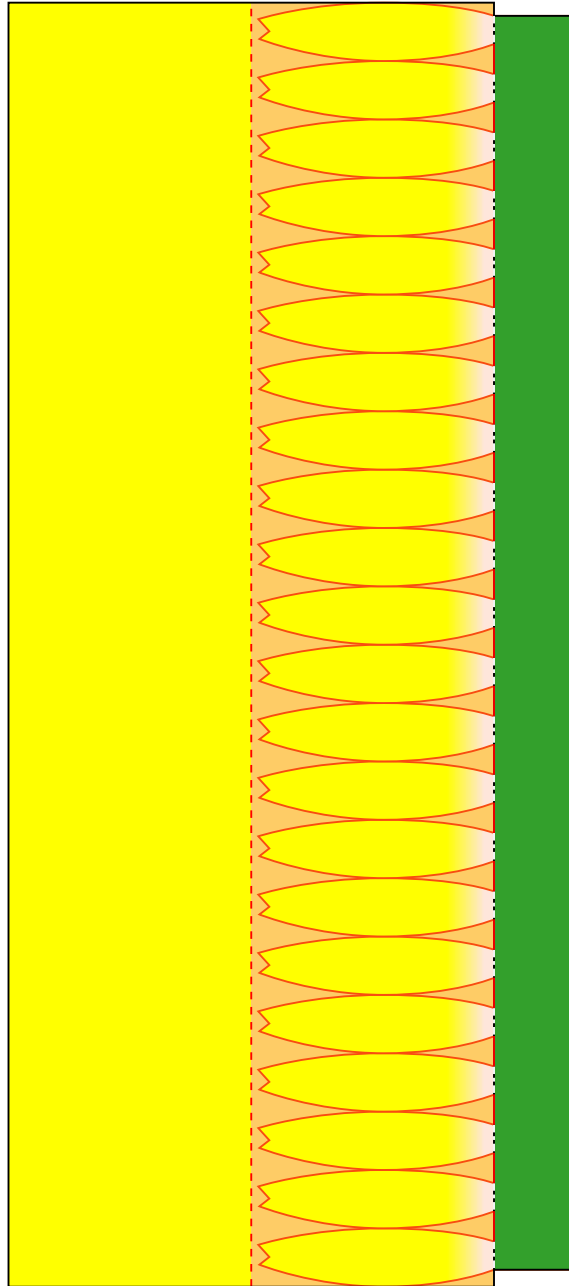
**CAUTION**  
Do not hit other people with the pointed edges. Doing so could result in injury.  
Adults should make sure that children observe this caution.

# Swallowtail Butterfly: Pattern

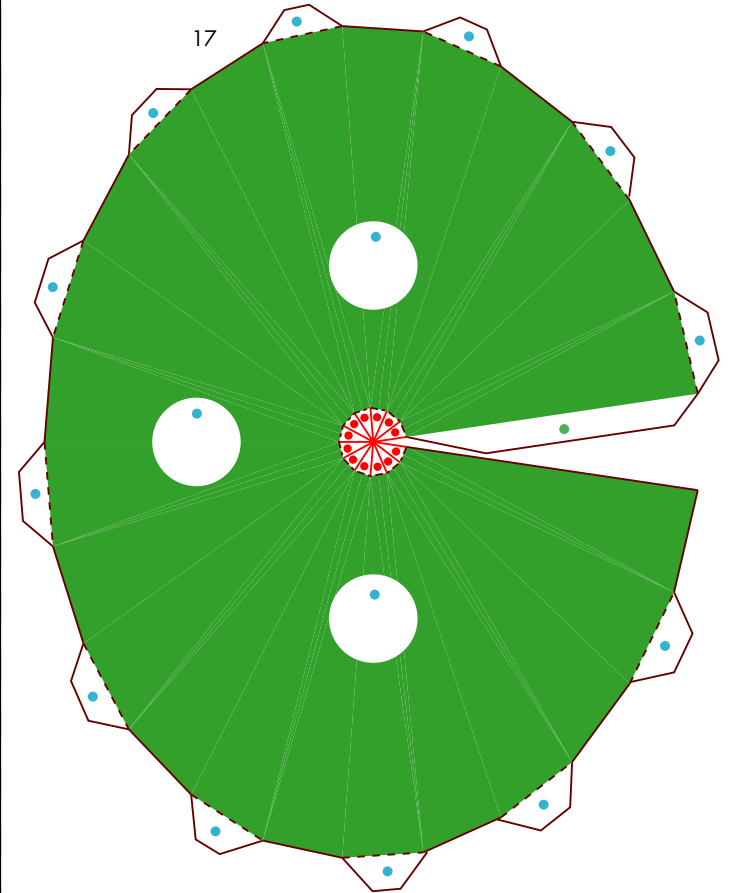
15



16

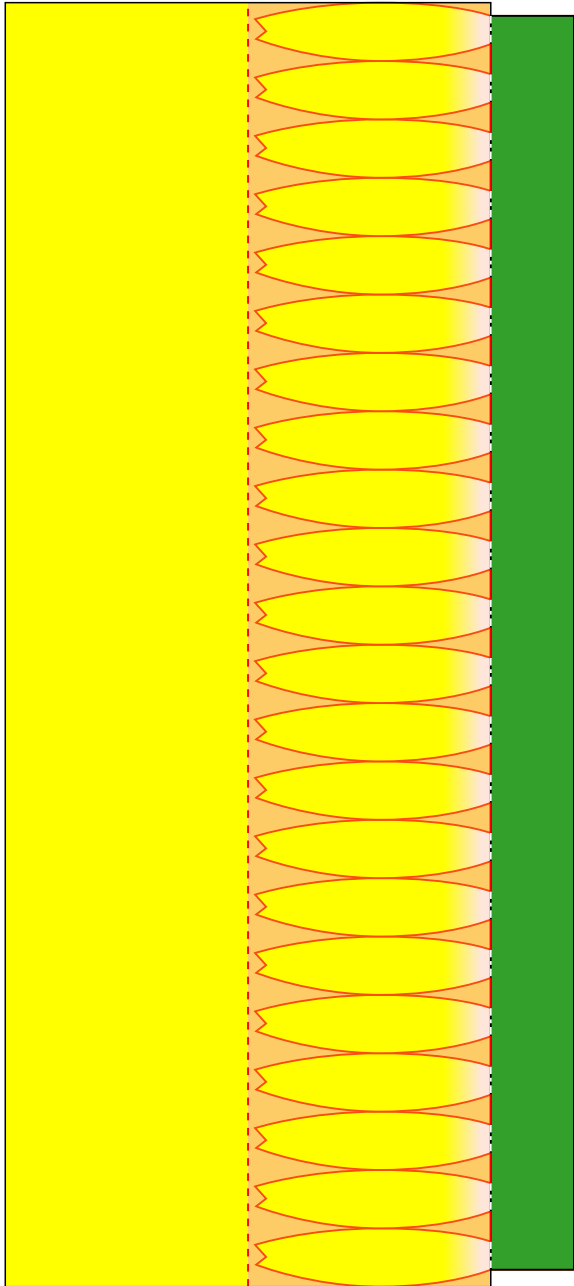


17

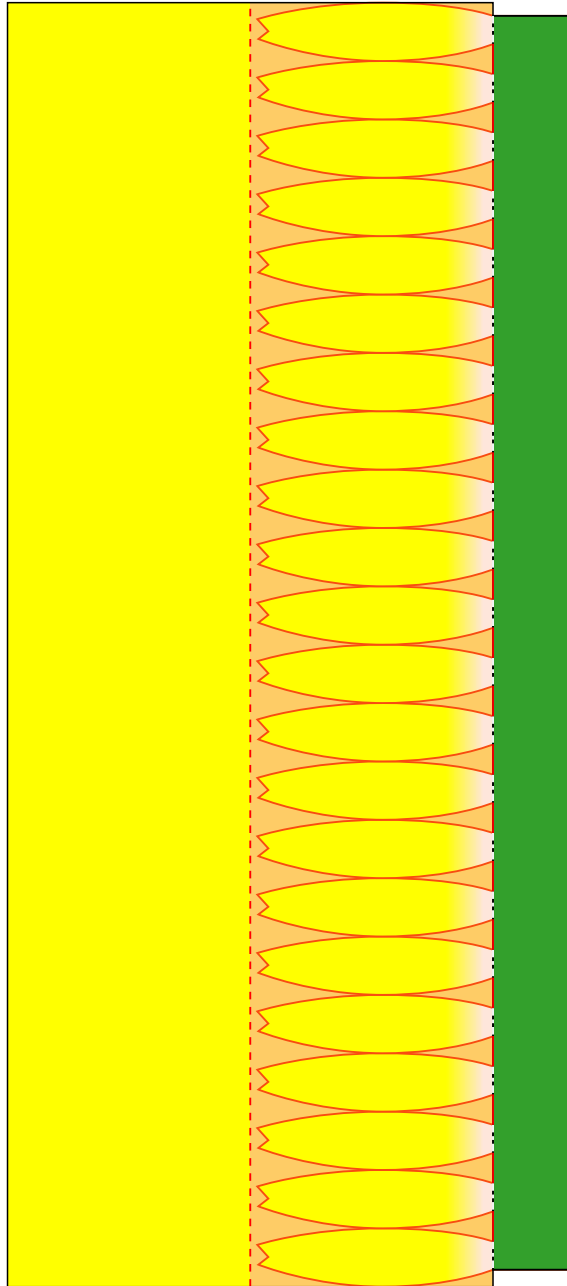


# Swallowtail Butterfly: Pattern

20



21



22

