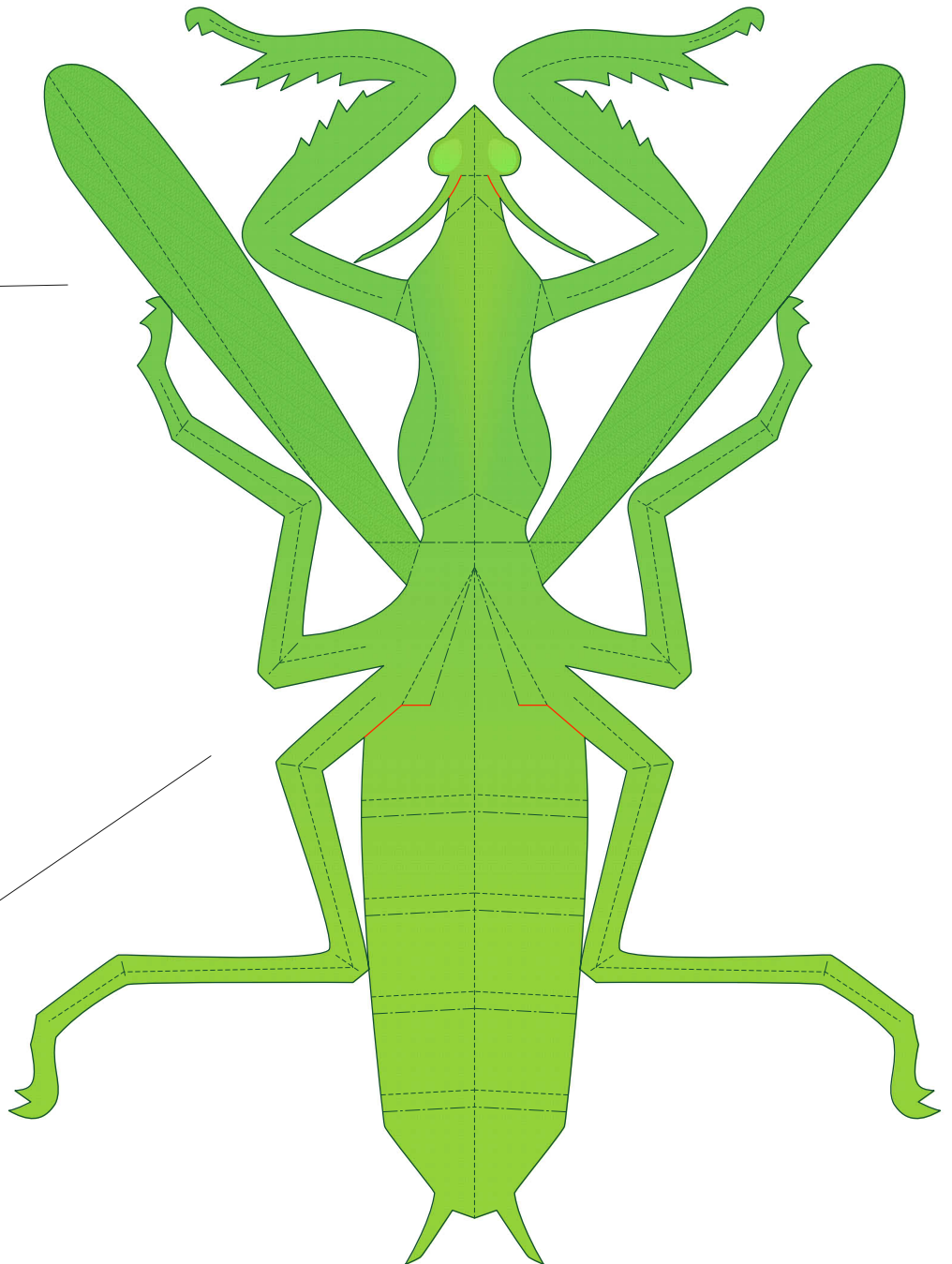
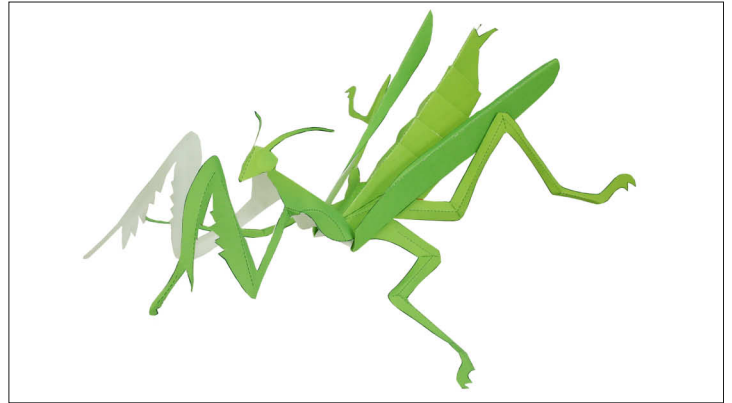


## Praying Mantis (Mantidae)

Distribution: Japan, China, Southeast Asia, etc.

Body size: Approx. 68 to 95 mm

The praying mantis has a long, thin body and its prickly forelegs are curved into the characteristic shape that resembles a scythe. It catches insects and small animals for food. Most praying mantis cannot fly very well, and use their wings mainly for threatening enemies.



### [Instructions]

Using the picture of the completed insect as a guide, fold along the mountain lines and valley lines to make your own insect.

----- Mountain fold

- - - - - Valley fold

—— Scissors line

— Cut in line



**[Caution]** Remember to be very careful when using scissors.

